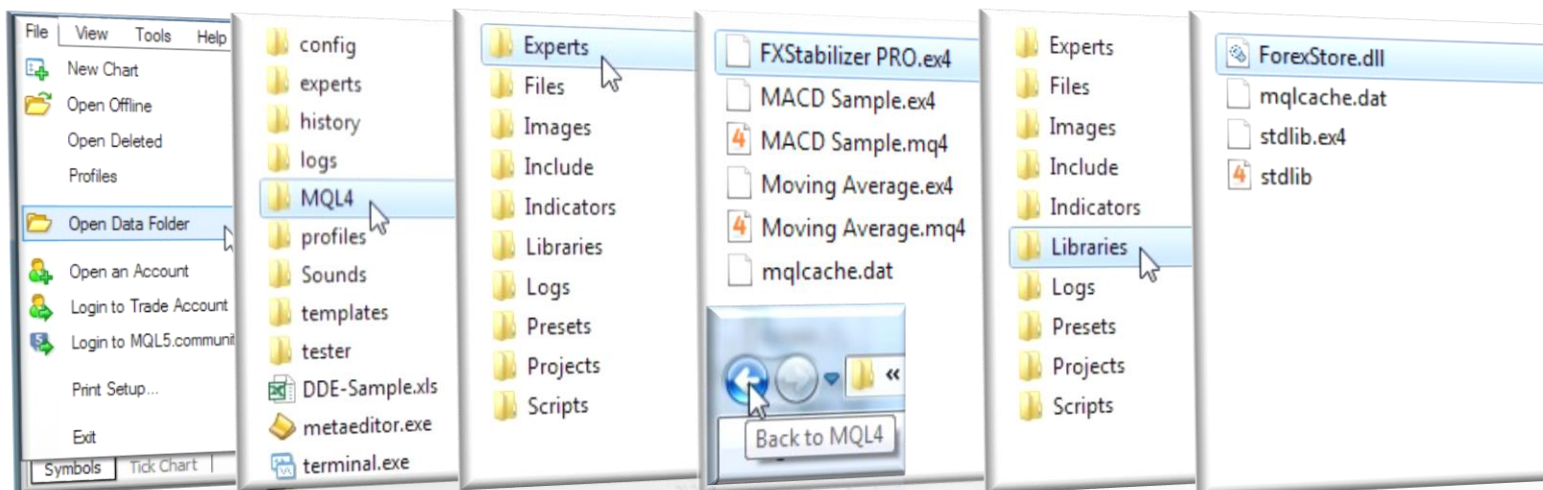


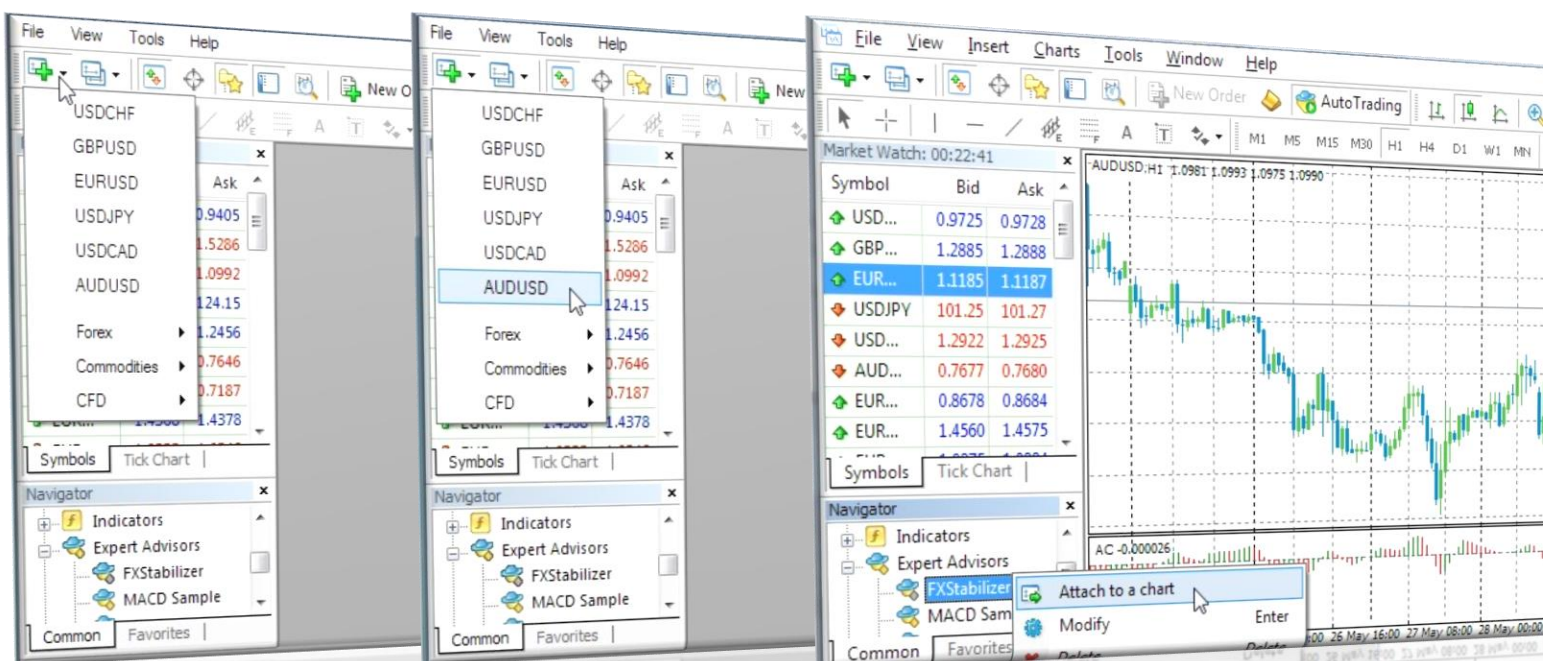
INSTRUCTIONS FOR INSTALLING **FXSTABILIZER PRO** AND PREPARING IT FOR TRADING



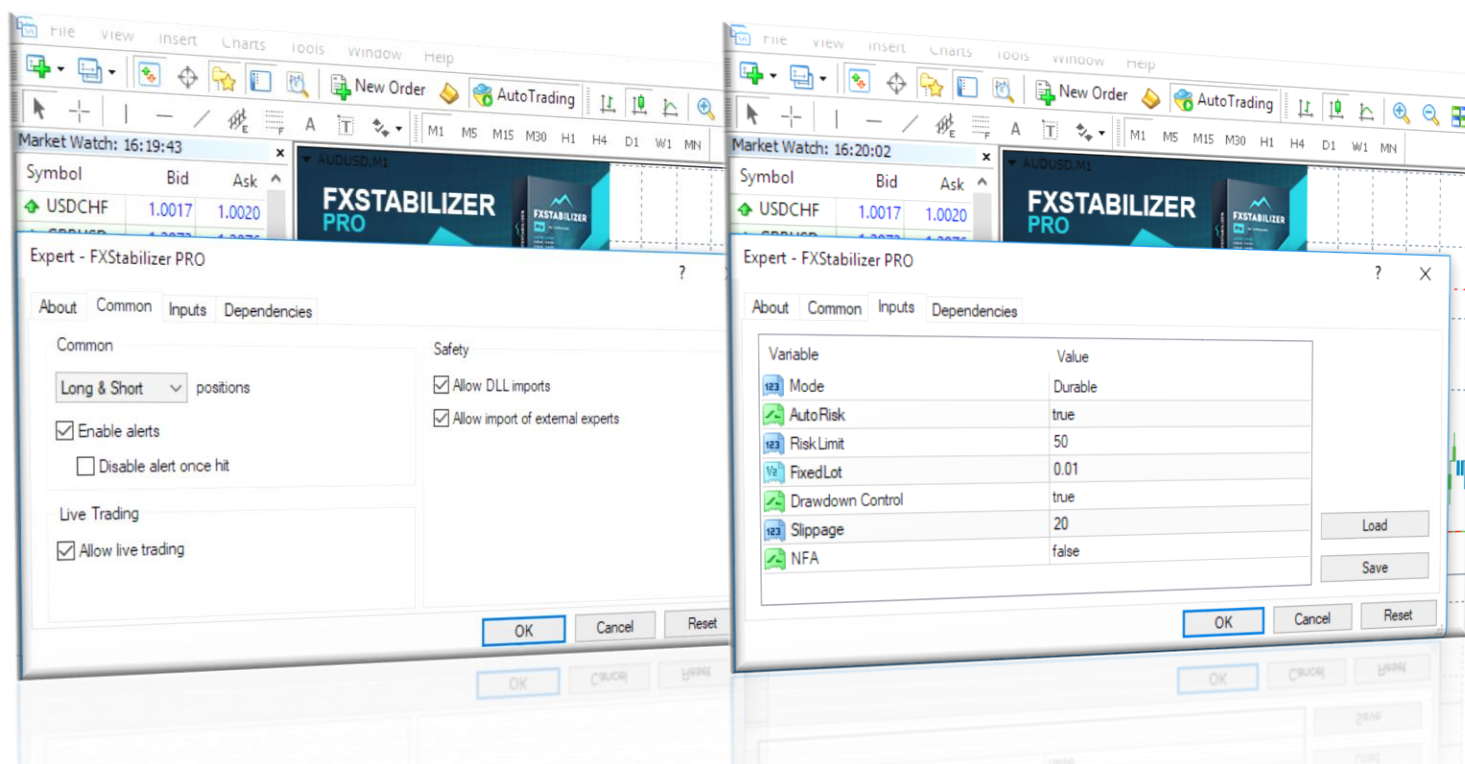
Open your MetaTrader 4. Then copy **FXStabilizer PRO.ex4** and **ForexStore.dll** from the archive to their folders.



Reboot your MetaTrader 4. Create a chart (or charts) with the supported currency pair(s) (**AUDUSD**, **EURUSD**, **EURJPY**, **USDJPY**, **USDCAD**, **CHFJPY**, **EURGBP**, or **GBPCHF**) with any timeframe and attach **FXStabilizer PRO** to the open chart(s). If you want the EA to trade on all the supported currency pairs you need to open 8 different charts.



Allow live trading and DLL imports. Change input settings, or leave the default parameters (recommended).



EURUSD and AUDUSD are the main pairs which have 2 modes: Durable and Turbo, their statistics are available on our website. Other 6 currency pairs (EURJPY, USDJPY, USDCAD, CHFJPY, EURGBP, GBPCHF) are additional and do not have a trade mode switch.

Durable mode is a reliable and stable style of trading. It is perfect for a longtime trading. Minimum deposits needed for Durable mode are **\$1300** for AUDUSD, and **\$1000** for EURUSD using 0.01 lot.

Turbo mode is an aggressive and more profitable style of trading of FXStabilizer. It is the best for a risky trading with maximal profit. Minimum deposit needed for Turbo mode is **\$310** for AUDUSD, and **\$1400** for EURUSD using 0.01 lot.

If you leave **AutoRisk** as enabled, FXStabilizer will set the first lot automatically, based on your deposit. If you disable **AutoRisk**, the EA will set the first lot based on the next **FixedLot** parameter. You can set there any lot you want.

RiskLimit is a money management of FXStabilizer. You can limit your maximal losses using this option. It is a part of your deposit (in percentage), which you are willing to risk. Works only if **AutoRisk** is "true".

Drawdown control – if "true" the EA works as usual and limits a drawdown. If "false" the EA deletes SL in the open orders and stops limiting a drawdown. The open orders will stay in the Market until they are closed by TP or because of a lack of money on a deposit. It helps to wait for a rollback to clients who are willing to take that risk.

You should leave **Slippage** as default to prevent an interruption of the logic of the EA. But there is a possibility to change it, if needed.

NFA – if "Yes", the EA will disable opening of possible opposite trades (no hedge) and apply FIFO rule. If "No", the EA will trade without NFA limitations. **Hide Stops** will hide SL and TP for all orders, if that is needed, and the EA will close trades in the necessary moments at their Market prices, same as on our account. Please notice, despite the fact of enabling NFA option, some brokers may show a FIFO error from time to time, but it is not dangerous for the logic of the EA.

Here are the minimum deposits needed for each supported currency pair:

EURUSD Durable	\$1000	EURJPY	\$1100
EURUSD Turbo	\$1400	USDJPY	\$1000
AUDUSD Durable	\$1300	USDCAD	\$910
AUDUSD Turbo	\$310	CHFJPY	\$860
		EURGBP	\$950
		GBPCHF	\$550

The most aggressive and profitable trading is when you set a 100% risk for each currency pair. You will need the leverage 1:200 (or higher) for such the trading. Minimum needed deposit is **\$1400** using 0.01 lot. **Notice, it is a very risky and dangerous trading!**

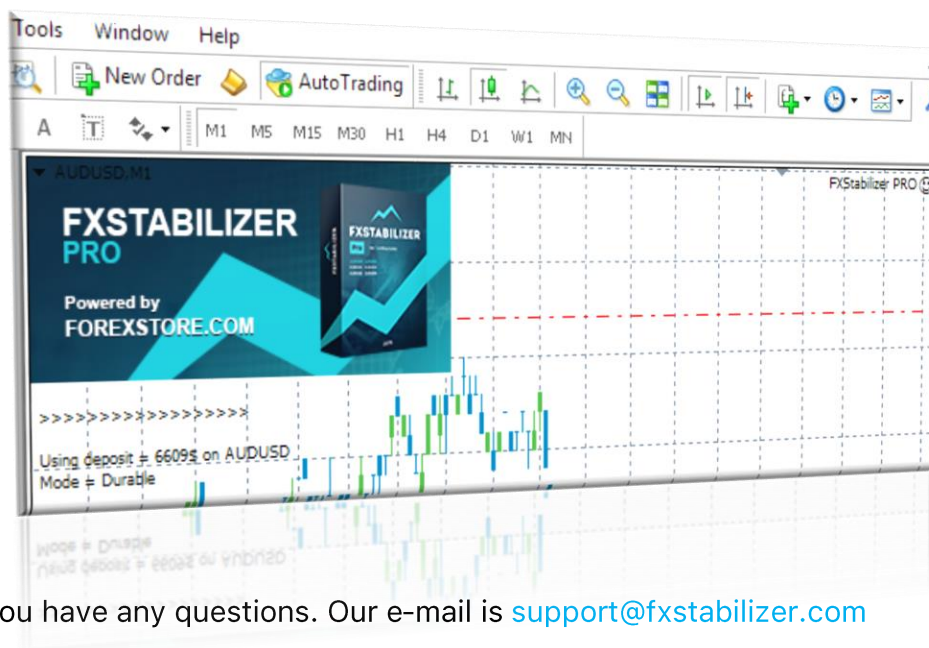
More preferable, but still aggressive trading is when you set a 50% risk for each currency pair. You will need the leverage 1:200 (or higher) as well, but 1:100 should also be enough. Minimum needed deposit is **\$2800** using 0.01 lot.

We recommend to trade 24/7 on the main currency pairs: AUDUSD and EURUSD, using one of the modes for each pair. You should set a 20-40% risk. Other settings you should leave as default. Minimum needed deposit is \$3500 using 0.01 lot.

For trading with other supported currency pairs, you should set a 10-20% risk for each pair. The more currency pairs you use, the lower the risk you should set. For the main currency pairs (AUDUSD and EURUSD) the risk can be slightly higher, if needed. Other settings you should leave as default. Minimum needed deposit is \$5500 using 0.01 lot.

Recommended leverage is 1:200 (or higher). But with a sufficient increasing of a deposit and reducing a specified risk, the leverage can be even 1:20.

Make sure that FXStabilizer PRO works properly: AutoTrading is enabled and the process is running.



Contact us, if you have any questions. Our e-mail is support@fxstabilizer.com